

# commercial applications

reducing building life cycle costs and promoting healthy spaces



Warehouse roof and wall installation



Multi-residential precast concrete wall

With its advanced thermal performance **AIR-CELL**® Insulation significantly reduces building life cycle costs by reducing energy load requirements for heating and cooling. **AIR-CELL**® is a clean, safe, fibre-free alternative to conventional bulk insulation, designed to replace sarking and batts in a single application. And because **AIR-CELL**® products do not contain toxic chemicals or volatile organic compounds (VOCs) you can be sure that they will not produce harmful emissions that impact internal conditioned spaces.

## benefits

- Reduces building life cycle costs
- Fibre-free, non-allergenic, and non-irritant
- Reflects up to 97% of radiant heat
- BCA-compliant to AS/NZS 4859.1
- All-in-one insulation and vapour barrier
- Quick and easy to install
- Does not require product support mesh
- Tough, strong, durable
- Waterproof and unaffected by moisture
- Anti-bacterial and anti-fungal
- Rodent and insect resistant



Insulaire® warehouse roof installation

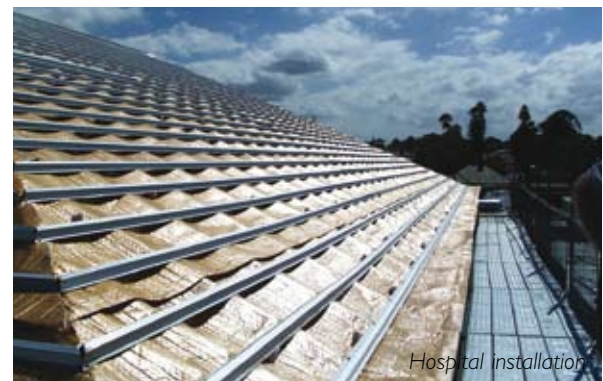


Shopping centre concrete roof

## thermal performance

Application	Heat flow in	Heat flow out	Product
Commercial Office	R <sub>p</sub> 3.2	R <sub>p</sub> 1.4	Insulbreak®65
Commercial Warehouse Roof	R <sub>p</sub> 2.0	R <sub>p</sub> 0.9	Insulbreak®65
Precast Concrete Wall	R <sub>p</sub> 1.8	R <sub>p</sub> 2.0	Retrosshield®
Concrete Roof (Suspended Ceiling)	R <sub>p</sub> 3.2	R <sub>p</sub> 1.6	Retrosshield®

The R-values shown are Total R-values for the building element as required by the Energy Provisions of the Building Code of Australia. AIR-CELL® products are manufactured, tested and packaged in conformance with AS/NZS 4859.1:2002 - Amdt 1. The contribution of the product Total R-values depends on installation and environmental conditions. The R-value will be reduced in the event of the accumulation of dust on the upward facing surfaces and in those cavities that are ventilated.



Hospital installation



Offsetting emissions with  
carbonneutral.com.au



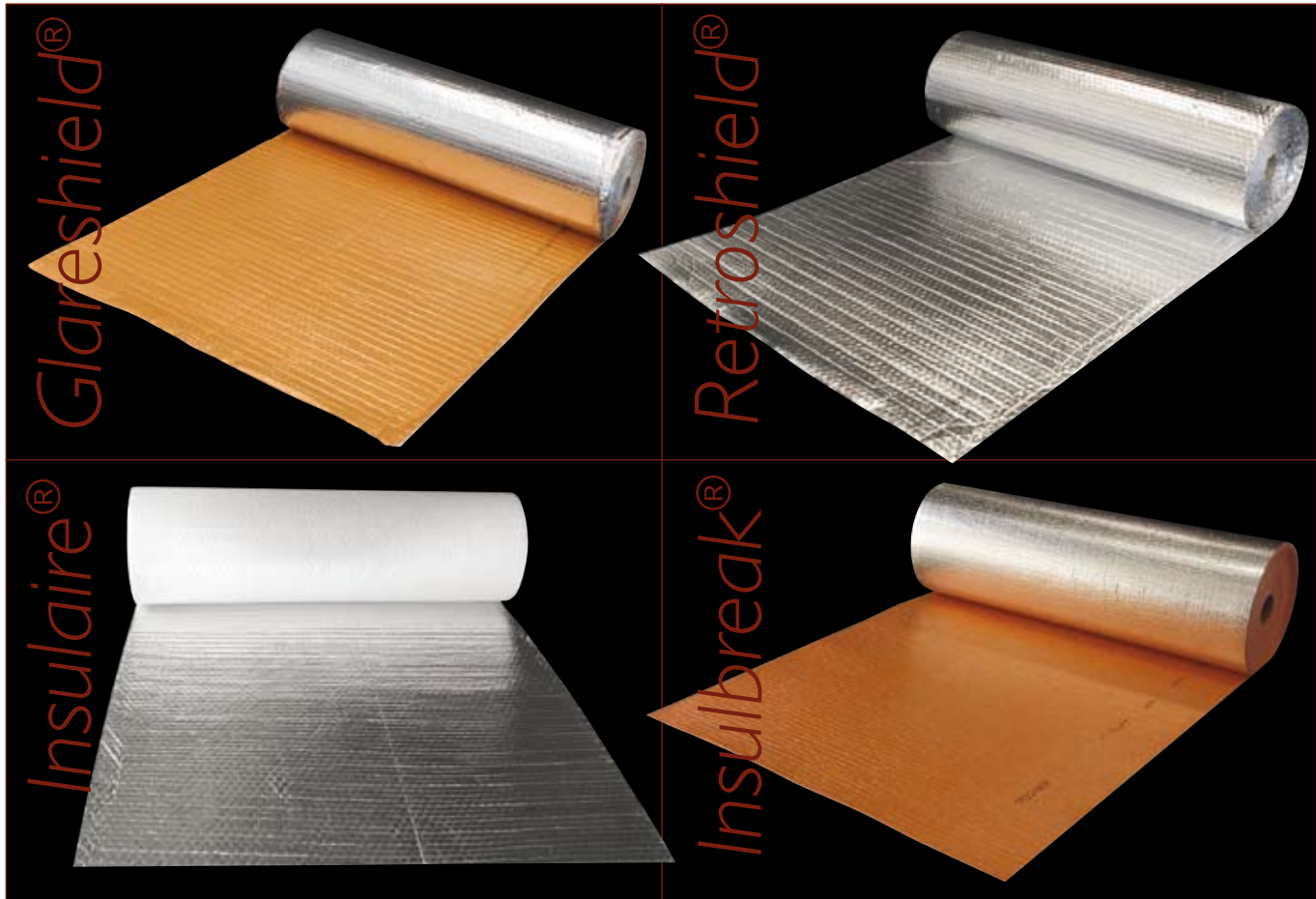
© AIR-CELL Innovations 2009



**AIR-CELL**  
INNOVATIVE INSULATION

**1300 AIRCELL (1300 247 235) www.air-cell.com.au**

## recommended products



## product specifications

	Glareshield®	Retrosshield®	Insulaire®	Insulbreak® 65
<b>Reflectance</b>				
Anti-Glare Face	95%	N/A	30% (White Face)	95%
Reflective Face	97%	97%	97%	97%
<b>Emittance</b>				
Anti-Glare Face	E0.05	N/A	E0.70 (White Face)	E0.05
Reflective Face	E0.03	E0.03	E0.03	E0.03
<b>Roll Diameter</b>	440mm	440mm	440mm	440mm
<b>Product Thickness</b>	7mm	7mm	6mm	6.5mm
<b>Roll Weight</b>	11kg	11kg	9.5kg	9.5kg
<b>Roll Size</b>	1350mm x 22.25m (30m <sup>2</sup> )	1350mm x 22.25m (30m <sup>2</sup> )	1350mm x 22.25m (30m <sup>2</sup> )	1350mm x 22.25m (30m <sup>2</sup> )
<b>Duty</b>	Extra Heavy	Extra Heavy	Extra Heavy	Extra Heavy

## product testing

<b>Thermal Performance</b>	AS/NZS 4859.1 (CodeMark certified)
<b>Surface Corrosion Resistance</b>	AS/NZS 4859.1 Appendix I
<b>Thermal Resistance</b>	ASTMC518
<b>Emittance</b>	ASTM-E408
<b>Flammability</b>	AS 1530.2 (Index ≤ 5)
<b>Ignitability</b>	AS 1530.3
<b>Flame Spread</b>	AS 1530.3
<b>Heat Evolved</b>	AS 1530.3
<b>Smoke Developed</b>	AS 1530.3

<b>Cone Calorimeter</b>	AS/NZS 3837
<b>Vapour Transmission</b>	ASTM-E96
<b>Edge Tear</b>	AS/NZS 4200.1 6.1.3
<b>Duty</b>	AS/NZS 4200.1 6.1.4
<b>Dry Delamination</b>	AS/NZS 4201.1 Method 1
<b>Wet Delamination</b>	AS/NZS 4201.1 Method 2
<b>Shrinkage</b>	AS/NZS 4201.3 Method 3
<b>Water Barrier</b>	AS/NZS 4201.4
<b>Burst Force</b>	AS 3706.4
<b>Impact Resistance</b>	AS/NZS 4040.4 (Modified)*

\* Glareshield® and Retrosshield®