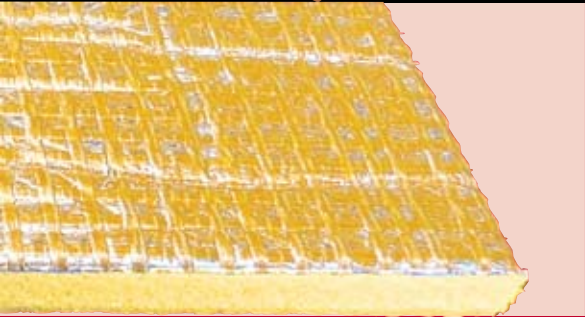


Insulbreak[®]

thermal break solution



AIR-CELL Insulbreak[®] is a 3-in-1 insulation, vapour barrier and thermal break solution for steel-framed construction. In steel-framed buildings Insulbreak[®] delivers the R0.2 thermal break required for BCA compliance*, reducing thermal bridging and conductivity between building elements. Insulbreak[®] is manufactured with a patented physically cross-linked, closed-cell foam structure, and sandwiched by highly reflective foil surfaces.

* Refer BCA Vol. 1 Section J 1.3(d), 1.5(e); Vol. 2 3.12.1.2(c), 3.12.1.4(d)

Benefits

- **Delivers R0.2 thermal break**
Solution for BCA compliance for steel-framed construction.
- **Advanced thermal performance**
Helps achieve a 5 star house energy rating.
- **Three products in one**
Acts as a thermal break, insulation, and vapour barrier in single application.
- **Fibre-free, non-allergenic, non-itchy**
Poses no health and safety risk and is non-asthmatic.
- **Quick and easy to install**
Saves time and helps reduce labour costs compared to conventional bulk insulation.
- **Tough, strong, durable**
Rated Extra Heavy Duty.
- **Waterproof and unaffected by moisture**
Ideal in humid climates and protects against water damage.
- **Anti-bacterial and anti-fungal**
Will not promote the growth of fungi or bacteria.
- **Rodent and insect resistant**
Does not provide a nesting medium for rodents and insects.
- **Compliant with Australian Standards**
Complies with AS/NZS 4859.1.

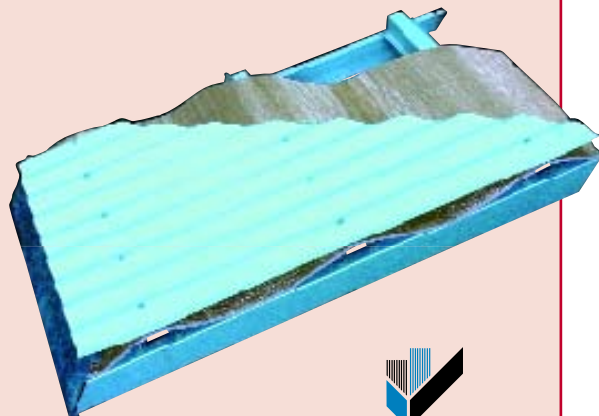
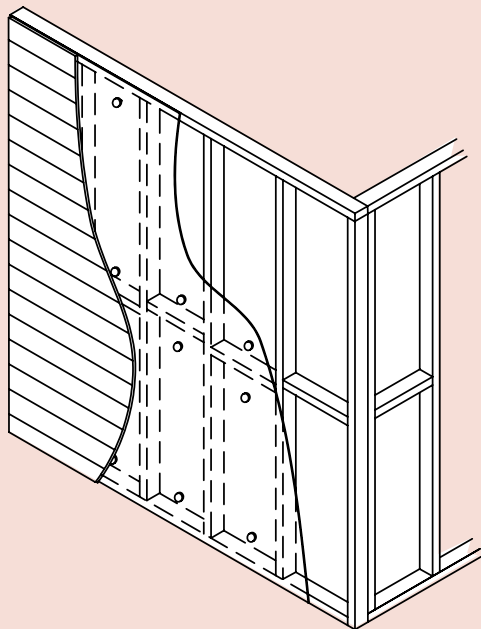
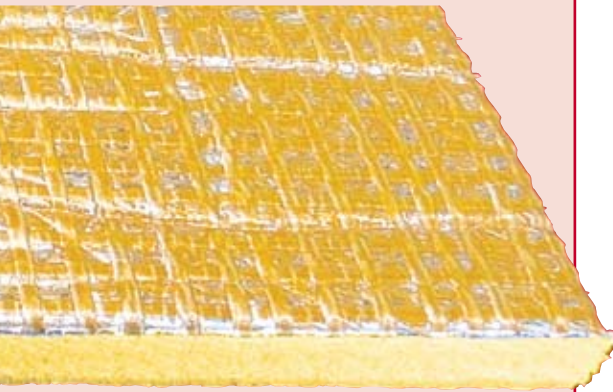


AIR-CELL
INNOVATIVE INSULATION

© AIR-CELL Innovations 2009

1300 AIR-CELL (1300 247 235) www.air-cell.com.au

Insulbreak®



Product Specifications

Product Thickness	6.5mm	8mm
	Insulbreak® 65	Insulbreak® 80
Thermal Break	R0.2	R0.25
Roll Diameter	455mm	500mm
Roll Weight	9.5kg	10kg
Roll Size	1350mm x 22.25m (30m²)	

Reflectance

Anti-Glare Face	95%
Reflective Face	97%

Emittance

Anti-Glare Face	E0.05
Reflective Face	E0.03

Product Testing

Corrosion Resistance	AS/NZS 4859.1 Appendix I	Pass
Flammability	AS 1530.2	Low
Ignitability		
Flame Spread	AS 1530.3	0/0/0/0-1
Heat Release		
Smoke Release		
Cone Calorimeter	AS/NZS 3837	Group I
Thermal Resistance	ASTMC518	R0.2 (6.5mm) R0.25 (8mm)
Emittance	ASTM-E408	Reflective E0.03 Anti-Glare E0.05
Vapour Transmission	ASTM-E96	Medium
Dry Delamination	AS/NZS 4201.1	Pass
Wet Delamination	AS/NZS 4201.2	Pass
Shrinkage	AS/NZS 4201.3	≤ 0.5%
Duty	AS 4200.1 6.1.4	Extra Heavy

Thermal Performance

Steel stud-framed walls	Heat Flow In	Heat Flow Out
Insulbreak® 65	R _T 1.6	R _T 1.8
Insulbreak® 80	R _T 1.7	R _T 1.9
Steel framed roof	Heat Flow In	Heat Flow Out
Insulbreak® 65	R _T 2.7	R _T 1.3

(Ventilated 22° pitch)[^]

[^]Higher R-value achievable in summer with lower pitch.

The R-values shown are Total R-values for the building element as required by the Energy Provisions of the Building Code of Australia. AIR-CELL® products are manufactured, tested and packaged in conformance with AS/NZS 4859.1:2002 - Amdt 1. The contribution of the product Total R-values depends on installation and environmental conditions. The R-value will be reduced in the event of the accumulation of dust on the upward facing surfaces and in those cavities that are ventilated.



Offsetting emissions with
carbonneutral.com.au